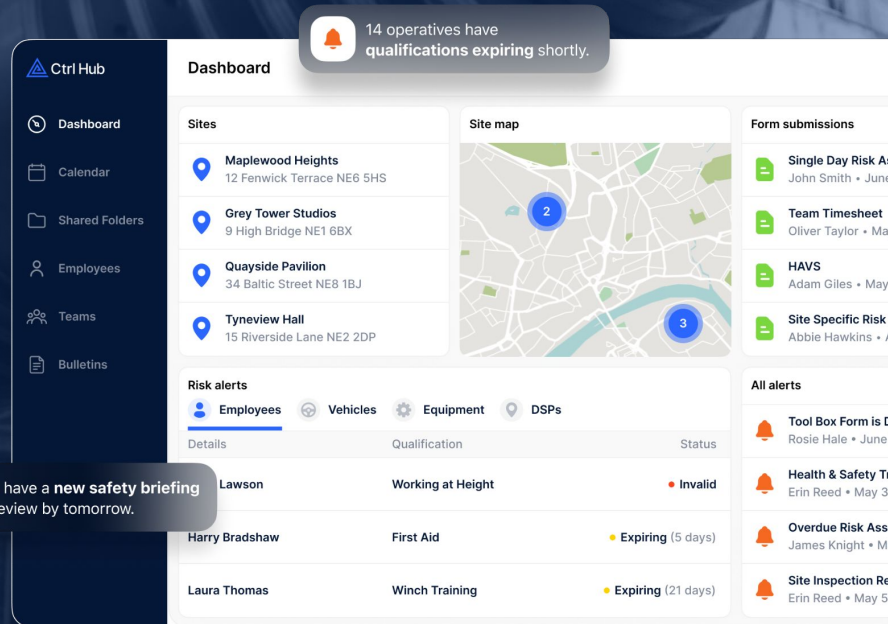


3 April 2025

Avoiding Costly HSE Fines: How to ensure compliance in 2025

An HSE and Ctrl Hub Webinar



The screenshot displays the Ctrl Hub dashboard interface. At the top, a notification banner states: "14 operatives have qualifications expiring shortly." The left sidebar contains navigation links: Dashboard, Calendar, Shared Folders, Employees, Teams, and Bulletins. The main content area is divided into several sections:

- Sites:** A list of four locations with their addresses:
 - Maplewood Heights, 12 Fenwick Terrace NE6 5HS
 - Grey Tower Studios, 9 High Bridge NE1 6BX
 - Quayside Pavilion, 34 Baltic Street NE8 1BJ
 - Tyneview Hall, 15 Riverside Lane NE2 2DP
- Site map:** A map showing the locations of the sites marked with numbered blue circles (2 and 3).
- Form submissions:** A list of recent submissions including "Single Day Risk Assessment" by John Smith, "Team Timesheet" by Oliver Taylor, "HAWS" by Adam Giles, and "Site Specific Risk Assessment" by Abbie Hawkins.
- Risk alerts:** A section with tabs for Employees, Vehicles, Equipment, and DSPs. The "Employees" tab is active, showing a table of alerts:

Details	Qualification	Status
Lawson	Working at Height	Invalid
Harry Bradshaw	First Aid	Expiring (5 days)
Laura Thomas	Winch Training	Expiring (21 days)

Below the risk alerts table, another notification banner states: "You have a new safety briefing to review by tomorrow."

Agenda

1. Introductions
2. Areas of focus for HSE in 2025
3. What to expect from an HSE visit
4. Common workplace hazards – and how to avoid / mitigate
5. Recent cases and lessons learned
6. Simple steps to compliance nirvana



Introductions



Mark Lisgo

Managing Director,
Ctrl Hub

Co-founded Ctrl Hub in 2015
7 years as Managing Director



John Heslop

HM Inspector of Health and Safety,
Health and Safety Executive

10 years' experience as Inspector/Investigator.
3 years' experience as Principal Inspector.
Responsible for North-East Inspection Team

Areas of focus for HSE in 2025



Respiratory Dust



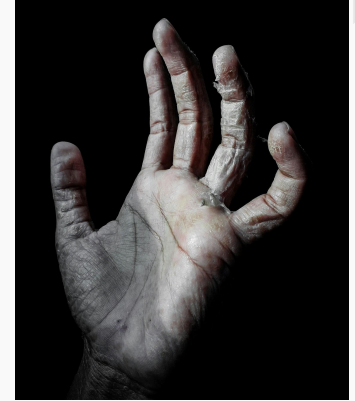
Asbestos



Manual Handling



Noise



Health Surveillance

What to expect from an HSE visit

- Will we receive prior notice?
- What happens on the day?
- What documentation do I need to produce?
- Practical advice ahead of time

Form submissions



Single Day Risk Assessment

John Smith • June 12th



Team Timesheet

Oliver Taylor • May 28th



HAVS

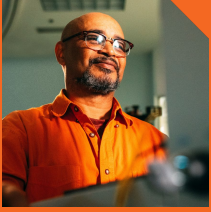
Adam Giles • May 21st



Site Specific Risk Assessment

Abbie Hawkins • April 24th





Common workplace hazards.... and how to mitigate

- HAVS exposure
- Dust exposure
- Deep excavations
- Working at heights
- Inadequate risk assessments





Recent cases and lessons learned

Repeated wood dust failures lands company with £4,000 fine.

Council fined £60,000 for exposing workers to Hand Arm Vibration Syndrome.

Company fined £600,000 for failure to manage legionella risk as prisoner dies.

Contractor sentenced after uncontrolled spread of asbestos.

£18,000 fines for company and director after man injured during excavation work.

£90,000 fines for company and operations manager after death from 20-foot fall.



Simple steps to stay compliant

- Plan - Do - Check - Act model
- Proper, documented risk assessment
- Paperwork v Digitisation



Ctrl Hub Contact Details



Mark Lisgo
Managing Director

+44 7770 339900
mark@ctrl-hub.com

Visit Us

Ctrl-Hub.com

Connect With Us



[LinkedIn](#)

Ctrl Hub

Dashboard

Calendar

Shared Folders

Employees

Teams

Bulletins

Dashboard

Sites

Maplewood Heights
12 Fenwick Terrace NE6 5HS

Grey Tower Studios
9 High Bridge NE1 6BX

Quayside Pavilion
34 Baltic Street NE8 1BJ

Tyneview Hall
15 Riverside Lane NE2 2DP

Site map

Form submissions

Single Day Risk Assessment
John Smith • June 1st

Team Timesheet
Oliver Taylor • May 2nd

HAVS
Adam Giles • May 2nd

Site Specific Risk Assessment
Abbie Hawkins • April 2nd

Risk alerts

Employees

Vehicles

Equipment

DSPs

Details

Qualification

Status

Sean Lawson

Working at Height

Invalid

Harry Bradshaw

First Aid

Expiring (5 days)

Laura Thomas

Winch Training

Expiring (21 days)

All alerts

Tool Box Form is Due
Rosie Hale • June 9th

Health & Safety Training
Erin Reed • May 31st

Overdue Risk Assessment
James Knight • May 2nd

Site Inspection Required
Erin Reed • May 5th